

# How can you be part of the solution?

**A Multidisciplinary Team is currently defining the scope and magnitude of the infestation by gathering data and populating a Dynamic Risk Profile. We need all stakeholders participation.**

## Report an infected tree

To send a WhatsApp Location Pin  
Turn on phone location

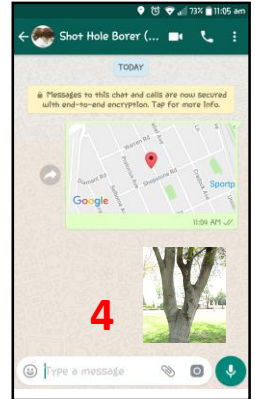
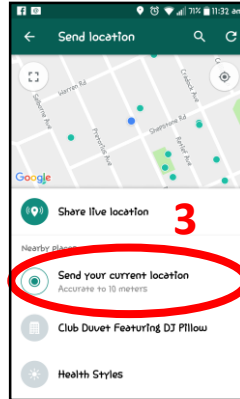
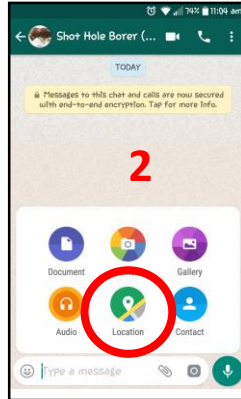
Open WhatsApp

1. Select Attach
2. Select Location
3. Select Send Your Current Location
4. Send photos

## Contribute to update the PSHB Dynamic Risk Profile

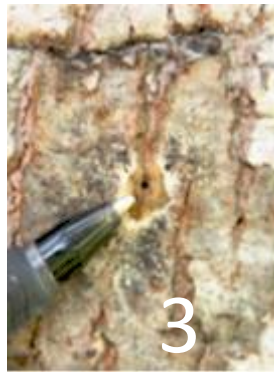
Follow the reporting procedure and use WhatsApp to send your observation to: **064 756 2736**

**View Dynamic Risk Profile – click [HERE](#)**



Take photos of suspect trees from several distances (Step 2). Include photos of:

1. The trunk or symptomatic branches
2. The symptoms (close-up)
3. The entry/exit hole, if visible, with a ballpoint pen for scale (remove gumming or exudate if necessary)
4. If Fusarium dieback is observed, include a picture of the entire tree.



## Next steps:

1. To determine the extent of the problem in and around Johannesburg, JCPZ and partners urge you to report any infected trees by using the WhatsApp as describe above.
2. We are busy populating the Dynamic Risk Profile with the assistance of all stakeholders
3. We are also busy to engage and consult with all stakeholders to share information and obtain inputs to develop a clear picture of the magnitude of the infestation
4. For more info **WhatsApp** your name and contact details (e-mail) to **064 756 2736** or visit the PSHB Landing Page click [HERE](#)